



AudioControl Bijou/Rialto Amp

Control4 Driver User Guide

Driver developed by



Introduction

This driver has been designed to provide two-way control of an AudioControl Bijou/Rialto NetAmp, via RS232.

This driver has been written and tested using an AudioControl Bijou amp, model CX10061.

AudioControl Configuration

It is recommended that the AudioControl system be installed, configured and tested by a suitably qualified engineer, according to AudioControl documentation, prior to integration with this driver. Some additional, specific configuration is required to ensure correct operation of the driver.

Driver Installation

Copy the file "amplifier_ip_audiocontrol_bijou.c4i" from the zip package to your Control4 driver location (by default this is Documents\Control4\Drivers). Open Composer and choose the **Search** tab from the **Items** pane.

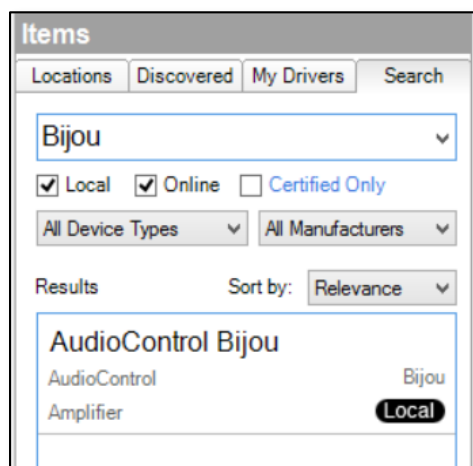


Figure 1: Driver Search

The driver can be found under:

Device Type: Amplifier
Manufacturer: AudioControl

Add the driver entitled "AudioControl Bijou" into your project.

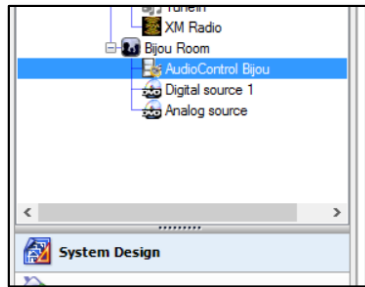


Figure 2: Driver

Driver Configuration

It is first necessary to create connections for the new driver; chose the **Connections** pane in Composer, and then select the **Control/AV** tab. Click on the Bijou and drag the serial contact you will use to the Home Controller you will use device.

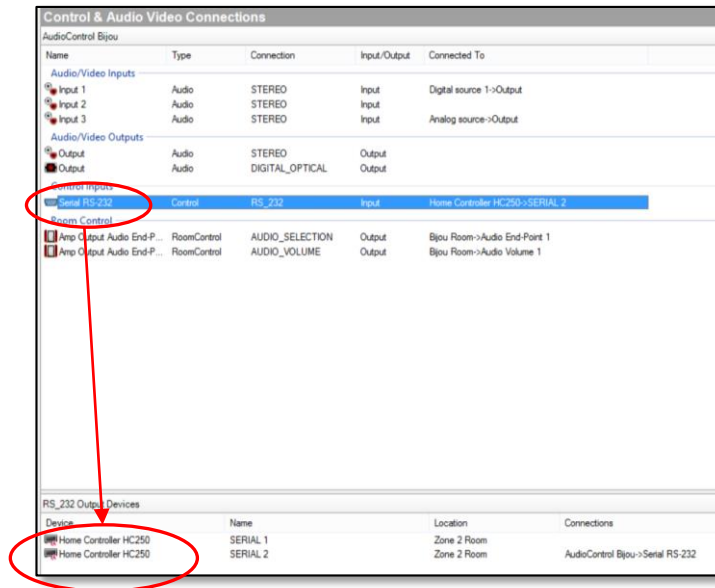


Figure 3: Driver Serial Connection

Now that the connections are established the driver properties should be populated with information from the Bijou amp the next time you start the Home Controller up.

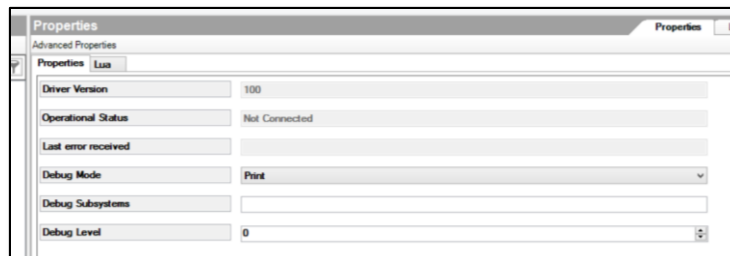


Figure 4: Driver Properties

The following properties are available, some of which are user editable:

Setting	Description
Driver Version	Reports the release version of the driver
Operational Status	Reports the current connection status. It will disconnect after sending messages
Last error received	Reports the last error received, if any
Debug Mode	For support use only
Debug Subsystems	For support use only
Debug Level	For support use only

Table 1: Driver Properties

Driver Commands

The driver features a number of commands used for control. Choose the **Programming** pane and select the driver in the **Device Actions** window:

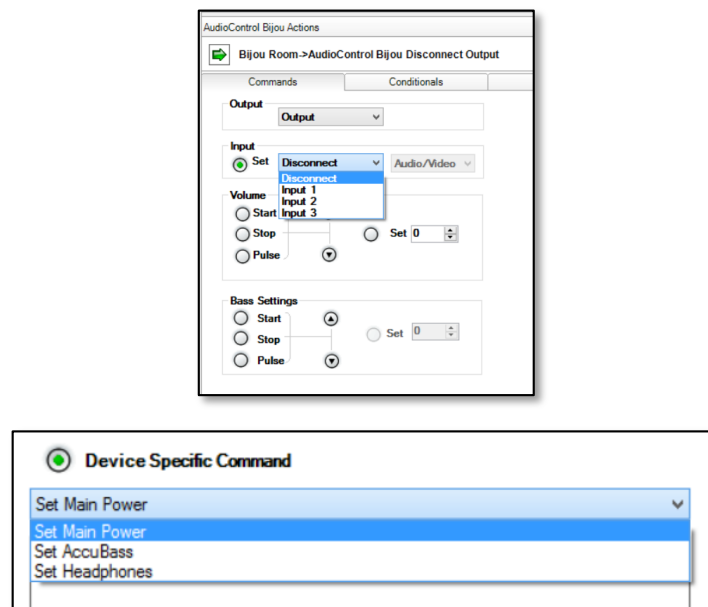


Figure 5: Driver Commands

The driver contains the usual commands found in amplifier drivers, including discrete input selection as well as the ability to raise, lower, and set volume. Bass is supported via the device's AccuBass. Additionally exposed are some Device Specific Commands. These can be

seen in the drop down box in Figure 5. Please refer to Bijou documentation for details of what these commands do.

Driver Variables

The driver features a number of variables for each zone, which provide feedback from the system.

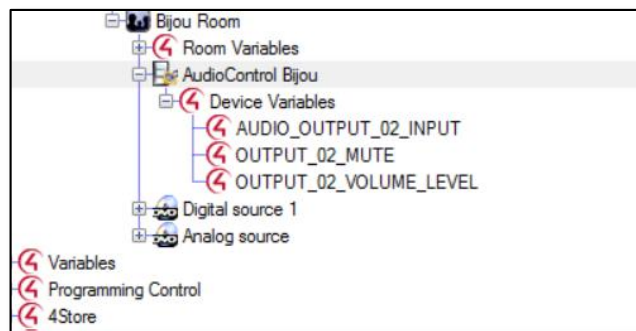


Figure 5: Driver Variables

Variable	Description
AUDIO_OUTPUT_xx_INPUT	The current input
OUTPUT_xx_MUTE	The current mute status
OUTPUT_xx_VOLUME_LEVEL	The current level for volume

Table 2: Driver Variables