

Integration Doc

Manufacturer:	Audio Control
Model Number(s):	M6400
g! Core Module Version:	8.0.295 (min)
Driver Developer:	B-Scotch LLC
Current Driver Version:	1.0.0
Firmware Tested	V1.0.17 R3, M6400
Document Revision Date:	6/30/2017

Overview & Supported Features

This document will cover integrating with the Audio Control Director M6400 audio Matrix. The M6800 should also work, however, no unit was available for testing but the protocol is identical. This device communicates via IP control.

THE FOLLOWING OPTIONS ARE FEATURES:

- 2 way control of Power, Zone source, Bass, Treble, mode,
- IP control
- Loudness control and LipSync (zones 5-8 only)
- Zone Temp, protection, Thermal and voltage readings
- Pre-generated Settings Pages
- Global Commands for All Zones Off, Chassis Power, signal sense
- Digital outputs are available as unique zones, however, only include power and source selection. These do not have the ability for volume, mute, mode, exc. These are also one-way.

THE FOLLOWING ARE NOT SUPPORTED:

- Feedback for the digital outputs
- Some functions, like the graphic band Eq, Mono, Filter, exc are only available from the unit itself

Any feature not specifically noted as supported should be assumed to be unsupported.
--

Driver Version History:

- 1.0.0 – Initial Rollout

Audio Control Configuration

Setting up for IP Control

IP Control:

Plug in the unit to the local network

From the factory, the unit is set to DHCP, if it does not receive an address, it will default to 192.168.0.249

Using Fing or some other IP Sniffing tool, find the IP address of the unit

From a browser, enter the IP address of the unit

Select the tab “Device Configuration”

From here, set the unit to an appropriate static IP address for your network

Set the unit for an appropriate static IP for your network

Reference of settings:

AudioControl
www.audiocontrol.com

Operation | **Device Configuration** | Zone Configuration | Homeowner

Amp Name: Director Matrix 6400

Zone Output Names

Zone 1	: 1
Zone 2	: 2
Zone 3	: 3
Zone 4	: 4
Zone 5	: 5
Zone 6	: 6
Zone 7	: 7
Zone 8	: 8
Digital Out A	: Digital Out A
Digital Out B	: Digital Out B

Channel Input Names

0.5 V rms	Channel 1-2	: 1-2
0.5 V rms	Channel 3-4	: 3-4
0.5 V rms	Channel 5-6	: 5-6
0.5 V rms	Channel 7-8	: 7-8
0.5 V rms	Channel 9-10	: 9-10
0.5 V rms	Channel 11-12	: 11-12
0.5 V rms	Channel 13-14	: 13-14
0.5 V rms	Channel 15-16	: 15-16
0.5 V rms	Digital In A	: Digital In A
0.5 V rms	Digital In B	: Digital In B

Device Address 192.168.0.249 **DHCP?** ☐

Device Netmask 255.255.255.0

Device Gateway 192.168.0.1

DNS Server 8.8.8.8

SMTP Server Address

SMTP Port

Return Address

Logging Email Address

Enable Email Alerts ☐

SMTP Server Address pool.ntp.org

SMTP Port

Time Offset (minutes)

Enable Daylight Savings ☒

Current Time 12/31/2000 00:12:54

Display Temperature Centigrade ☐

Important:

In the same screen, be sure to leave the Zone names as they are. These are used to parse out zone data.

Amp Name Director Matrix 6400

Zone Output Names	
Zone 1	: 1
Zone 2	: 2
Zone 3	: 3
Zone 4	: 4
Zone 5	: 5
Zone 6	: 6
Zone 7	: 7
Zone 8	: 8
Digital Out A	: Digital Out A
Digital Out B	: Digital Out B

Channel Input Names	
0.5 V rms	Channel 1-2 : 1-2
0.5 V rms	Channel 3-4 : 3-4
0.5 V rms	Channel 5-6 : 5-6
0.5 V rms	Channel 7-8 : 7-8
0.5 V rms	Channel 9-10 : 9-10
0.5 V rms	Channel 11-12 : 11-12
0.5 V rms	Channel 13-14 : 13-14
0.5 V rms	Channel 15-16 : 15-16
0.5 V rms	Digital In A : Digital In A
0.5 V rms	Digital In B : Digital In B

Device Address 192.168.0.249 DHCP? ☒
 Device Netmask 255.255.255.0
 Device Gateway 192.168.0.1
 DNS Server 8.8.8.8

SMTP Server Address
 SMTP Port 0
 Return Address
 Logging Email Address
 Enable Email Alerts ☐ Custom
 SMTP Server Address pool.ntp.org
 SMTP Port 123
 Time Offset (minutes) 0
 Enable Daylight Savings ☒
 Current Time 12/31/2000 00:20:51
 Display Temperature Centigrade ☐

Save Settings Send Update Email

g! Configuration

Okay, once the unit is configured, we can add the driver into ELAN.

Installation Process

With 3rd party drivers, these are not in the driver list from the factory, but are plug-ins. To add the one for Audio Control Concert":

1. Download the .EDRVC file
2. Place this file in a folder on your PC
3. In the configurator, navigate to the Media tab
4. Select "Zone Controllers", and select "Add New Zone Controller"
5. Select search folder, and navigate to the folder in which the driver is located on your PC.

NOTE: It is good to note that once selected, the configurator will always look to this folder for 3rd party drivers so in best practice you should create a folder in which you keep all your 3rd party drivers in.

NOTE: If you have already set your folder previously and your driver is in said folder (as it should be if you read the above note©), then the driver will already be in the populated list for you to select from.

6. Select the Audio Control M6400 from the list
7. The driver should now be loaded into the configurator.

NOTE: No Communication device is needed

bscotchllc@gmail.com

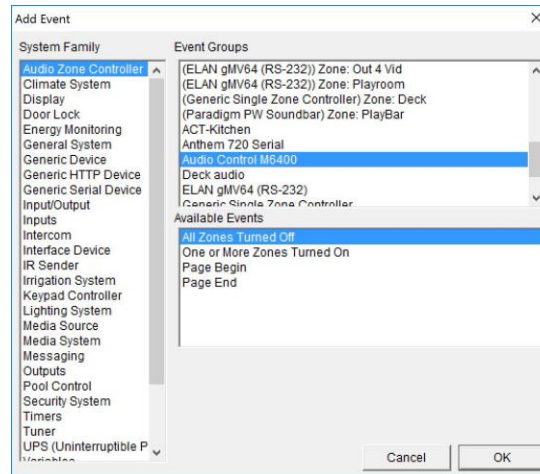
8. If IP, enter the IP address in the box:

Zone Controller : Audio Control M6400

Name	Audio Control M6400
System #	24062
Driver Version	1.0.0
Driver Vendor	B-Scotch
Device Type	Audio Control M6400
IP Address	192 . 168 . 0 . 101
Port	23

Chassis Power

This unit has zone power and chassis power. If the chassis power is off, the zones will not respond. In the driver, there is logic to turn on the chassis for you, but I did not put logic in place to turn off the chassis as some may want it left on and some may use triggers to turn it off, etc. I did, however, include event map commands to be able to turn off the chassis if you choose to. For example, using the event of "All zones turned off"



Gotchas:

- Make sure the Zone Names set in the device are set to default: "Zone 1" exc.
- Digital outputs are limited to one-way power and source selection only

Updates:

Unlike a built-in driver which updates occur with the controller's firmware, 3rd party drivers may be updated without a Core Module update. If an update for the driver is needed and becomes available (check with the driver site), download the updated driver and place it in the same folder that your original driver was in. This should be the same folder that you store all downloaded 3rd party drivers as well as the folder the configurator will look at when searching for drivers. Now, navigate to the drivers properties page and on the bottom you will see an "Update" button. Press this and the driver will be updated if the file location is correct.

Common Mistakes:

1. You can't find the driver – refer to step number 2
2. You get a Schema error message when loading the driver:
 - This driver is Schema 11, which means it needs core module 8.0.278 or later for it to function.
3. No feedback
 - Make sure the Zone Names in the unit are set to default, "Zone 1", etc
 - Digital Zones are one-way
4. No IP Control
 - Be sure the "Control Option is set to "IP"
 - Be sure it has a valid Static IP address set
 - Be sure the IP address matches that of what is entered in the configurator
5. You are trying to use this on an HC controller
 - 3rd Party driver support is based on the Linux operating system and as such is only available to SC/g1 controllers
6. My wife told me sex is so much better on vacation. Not a good text to receive!

ELAN DEVELOPER PARTNER INFORMATION

This ELAN driver was written by:

B-Scotch LLC