

# KEY REASONS TO BUY THE

# OVERDRIVE

**PLUS**

## Two Channel Line Driver with Input for Optional Remote



### Key Benefits of the OVERDRIVE Plus

- Better sound from every amplified system
- Increased signal level allows amplifiers to perform at their maximum
  - The **PLUS** has an input for optional dash remote for system volume control or bass level control
- Increased dynamic range for more live sounding music
- High voltage preamp for maximum SPL
  - Bulletproof 5 year warranty (When installed by an authorized AudioControl dealer.)
  - Made in USA

### Key Features of the OVERDRIVE Plus

- 24dB of Signal Gain
- 13 volts Max Output
- Input for Optional Dash Remote
- Selectable Ground Isolation
- Differentially Balanced Inputs
- Compact Chassis for Easy Mounting

### Who will like the OverDrive Plus?

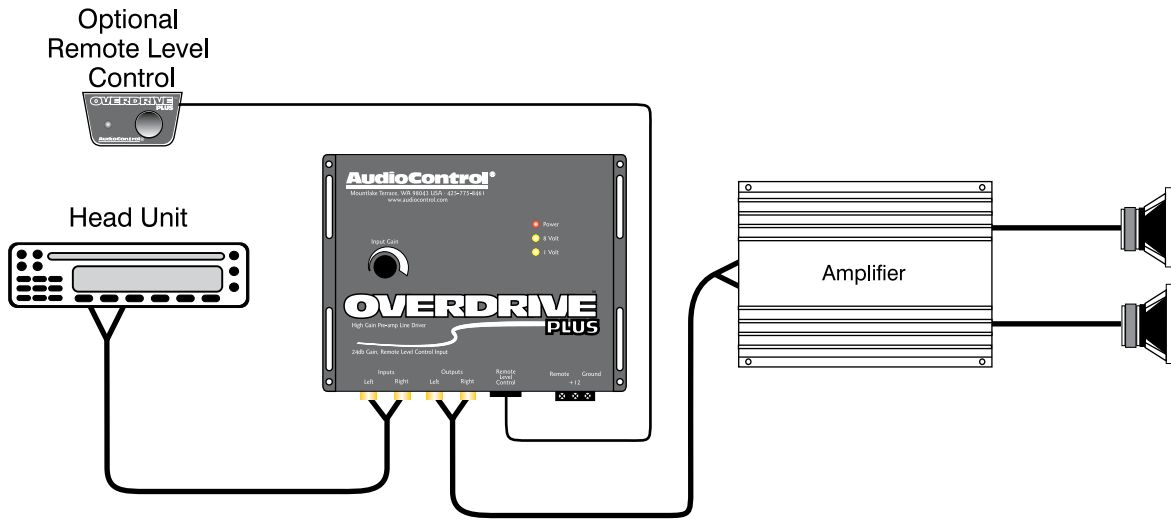
**Everyone!** This small investment makes a huge difference in sound. Head units these days have greatly reduced preamp outputs compared to only a few years ago. This forces users to crank up amp gains to get the volume back. The result? Increased noise, increased distortion, and reduced dynamic range. The music sounds "canned". The OVERDRIVE Plus gives amps the signal they need to perform to their maximum and opens up the dynamic range for that "live music" experience.

**Anyone who wants to add a Sub to their system.** Bass takes power! Your subwoofer amp needs lots of signal to drive out those ground pounding bass notes. The OVERDRIVE Plus gives your sub amp the input it needs with up to 13 volts of signal from our PWM power supply. You get rock solid bass so your car goes boom instead of blap.

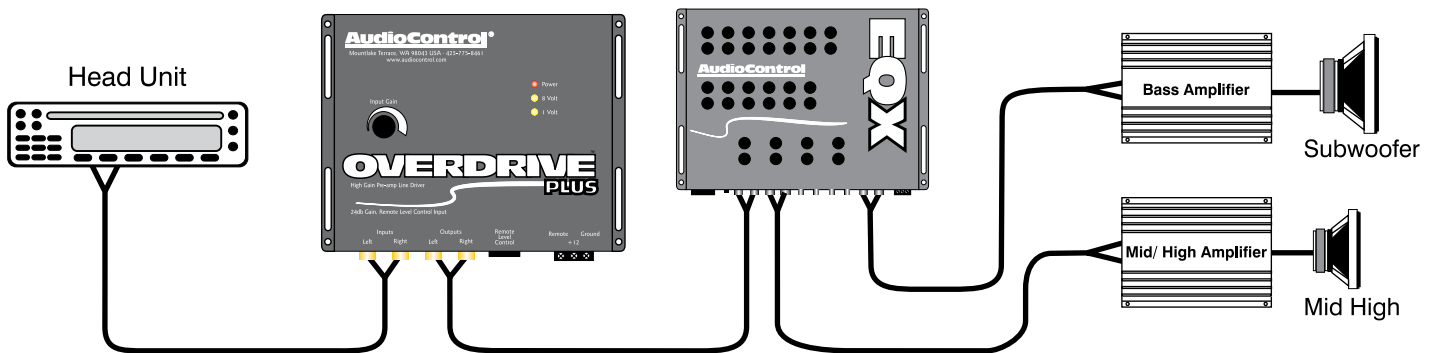
**The family man (or Gal).** The OVERDRIVE Plus allows a dash remote to be added so you can turn the bass down when the kids are in the car (or when your significant other just wants to talk). You can also use the optional dash remote as an overall system volume control .

# System Diagrams

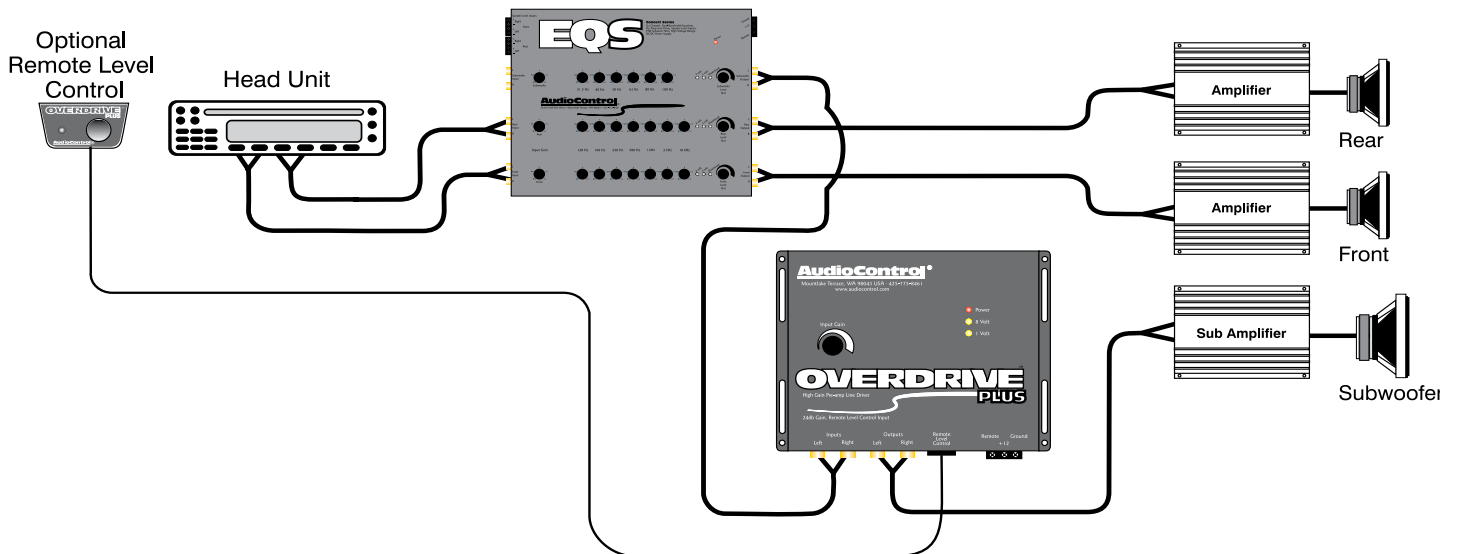
## System #1 - Basic Line Driver System with volume control



## System #2 - Basic Sub-amp System



## System #3 - Equalized 4 Channel plus Sub System with bass level control



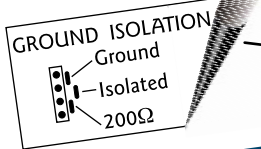
# Key Features of the **OVERDRIVE PLUS** Line Driver

Level control matches head unit output to amplifier input level (up to 9.5 volts RMS)

Voltage indicator LED lets you know how your OVERDRIVE Plus is operating



Input Gain



- Power
- 8 Volt
- 1 Volt

Internal ground isolation jumper lets you configure your OVERDRIVE Plus for the maximum signal with the minimum of unwanted noise

2-channel RCA inputs

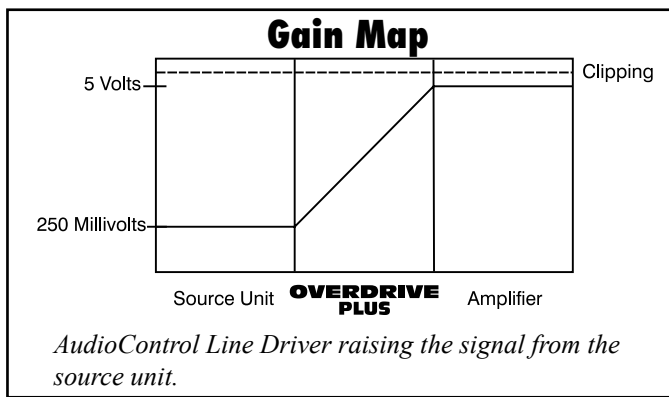
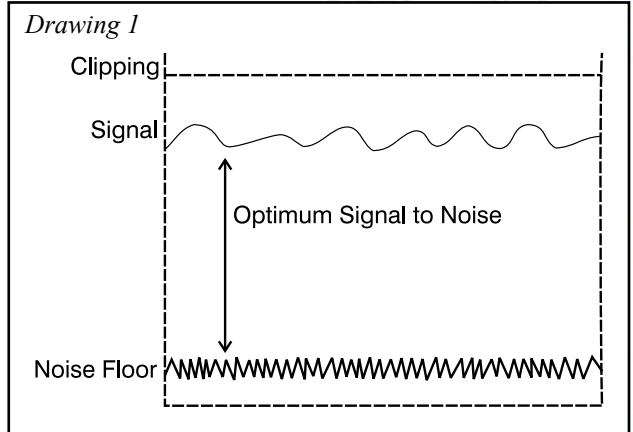
Ultra low impedance, 2-channel output up to 13 volts for maximum amp performance and a live music experience

Remote Input accepts optional dash remote for volume or bass level

Removable power plug for easy wire hook-up

## Why Level Match

Properly matched signals on the inputs make better sound on the output. You want high signal to noise levels so you hear all of the music but none of the thermal hiss which is present in all audio systems (sometimes even worse in digital systems). As shown in Drawing 1, you need the signal level to be as far as possible above the noise floor. Amplifiers like to receive the hottest possible signal to allow them to provide the maximum dynamic range. Unfortunately, a majority of the source units available only produce a very small fraction of what the amplifier wants. This limits the audio systems performance potential. As shown by the gain map below, the OVERDRIVE PLUS line driver raises the signal level that comes from the head unit to a level that is desirable to the amplifier. You achieve maximum performance!



## OVERDRIVE PLUS SPECIFICATIONS

All specifications are measured at 14.4 VDC (standard automotive voltage). As technology advances, AudioControl reserves the right to continuously change our specifications, like our Pacific Northwest weather.

Maximum input/output level .....	9.5Vrms/13V peak
Frequency response .....	10Hz-100kHz; +/-1dB
Total harmonic distortion .....	.0005%
Signal to Noise ratio .....	-110dB
Inputs/Outputs .....	2
Input Impedance .....	20K Ohms
Output impedance .....	50 Ohms
Output gain .....	24dB
Power supply .....	transformer isolated PWM DC/DC converter
Power draw .....	150mA
Recommended fuse rating .....	1 Amp
Size .....	5 3/4" x 7" x 1.15"
Weight .....	2 lbs

**AudioControl**®

making good sound better®

22410 70th Avenue West  
 Mountlake Terrace, WA 98043 USA  
 Phone 425-775-8461 • Fax 425-778-3166  
 www.audiocontrol.com

©2011 AudioControl, Inc.  
 All rights reserved.