



AudioControl D3400-4400 NetAmp

Control4 Driver User Guide

Version 1.02

Driver developed by



Introduction

This driver has been designed to provide two-way control of an AudioControl D3400 or D4400 NetAmp, via TCP/IP.

This driver has been written and tested using an AudioControl D3400 amp.

Driver release version: 1.02

AudioControl Configuration

It is recommended that the AudioControl system be installed, configured and tested by a suitably qualified engineer, according to AudioControl documentation, prior to integration with this driver. Some additional, specific configuration is required to ensure correct operation of the driver.

The amplifier should ideally be configured with a static IP address in the same range as the Control4 system:

1. Enter the IP address of the amp into the web browser of a computer connected to the same network, to display the web interface.
2. Choose the **Configuration** tab.
3. Enter your static IP address information and click **Save Settings**.

Driver Installation

Copy the file "amplifier_ip_audiocontrol_d####.c4i" from the zip package to your Control4 driver location (by default this is Documents\Control4\Drivers). Open Composer and choose the **Search** tab from the **Items** pane.

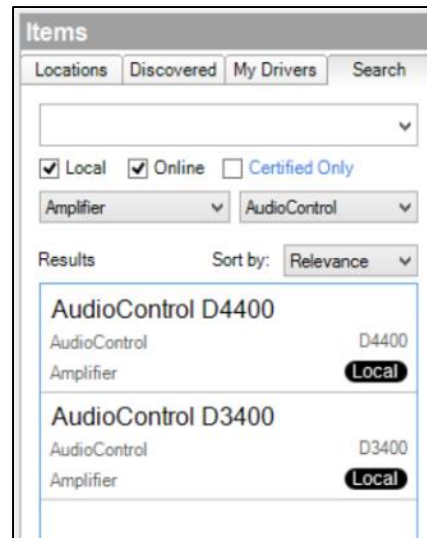


Figure 1: Driver Search

The driver can be found under:

Device Type: Amplifier
Manufacturer: AudioControl

Add the driver entitled "AudioControl D####" into your project. Note that the driver is added to your project with Zones 2-8 located as separate (sub) device to Zone 1:

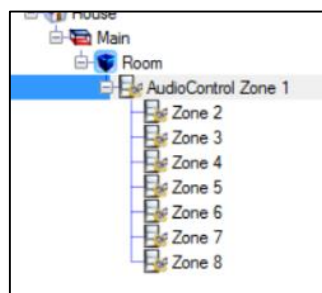


Figure 2: Driver Zones

Driver Configuration

It is first necessary to create connections for the new driver; chose the **Connections** pane in Composer, and then select the **Network** tab. Double click on the *AudioControl Zone 1* device in the **IP Network Connections** list and enter the NetAmp's IP address:

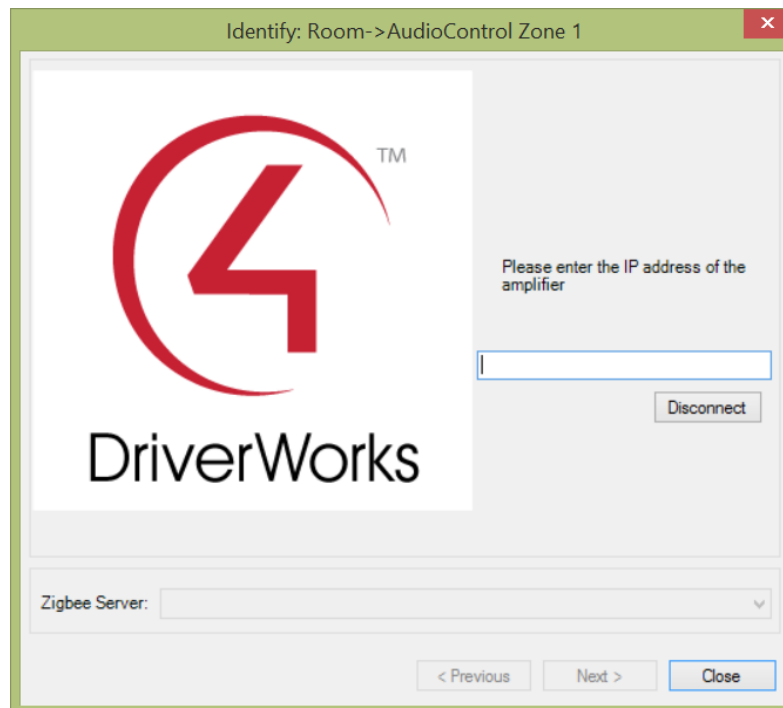


Figure 3: Driver Network Connection

Now that the connections are established the driver properties should be populated with information from the AudioControl amplifier; choose **System Design** and select the driver:

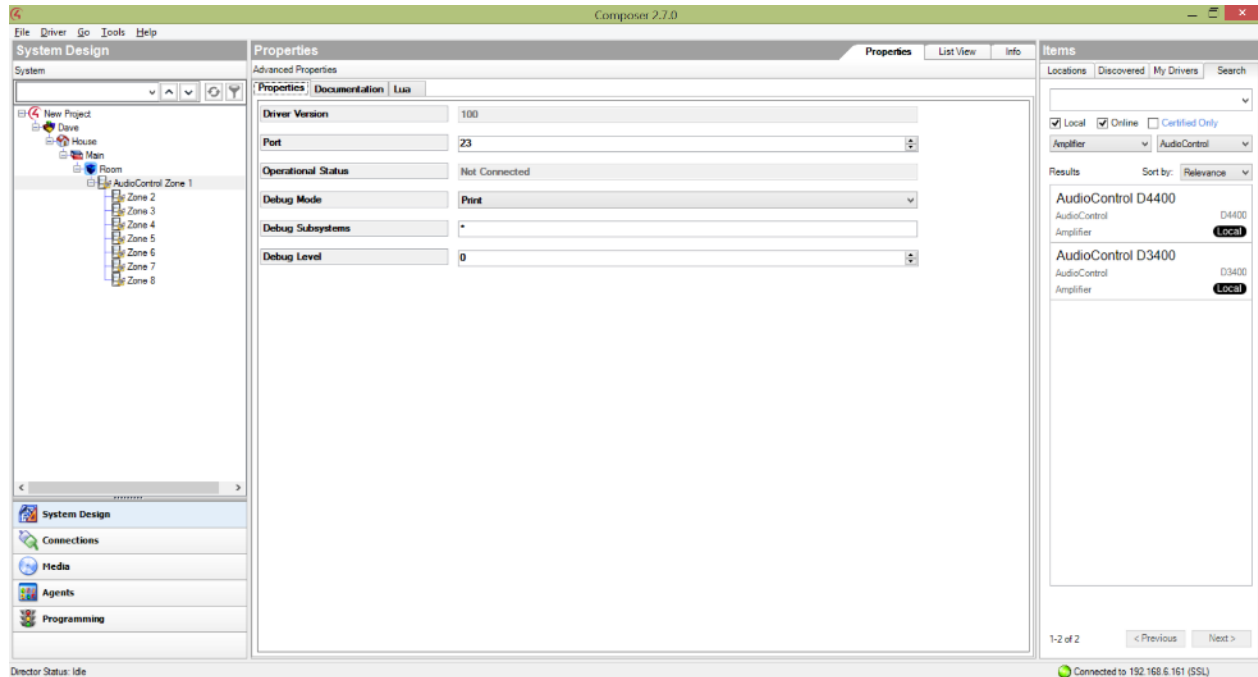


Figure 4: Driver Properties

The following properties are available, some of which are user editable:

Setting	Description
Driver Version	Reports the release version of the driver
Port	Specify the port number used to communicate with the NetAmp
Operational Status	Reports the current connection status
Debug Mode	For support use only
Debug Subsystems	For support use only
Debug Level	For support use only

Table 1: Driver Properties

Driver Commands

The driver features a number of commands used for control. Choose the **Programming** pane and select the driver in the **Device Actions** window:

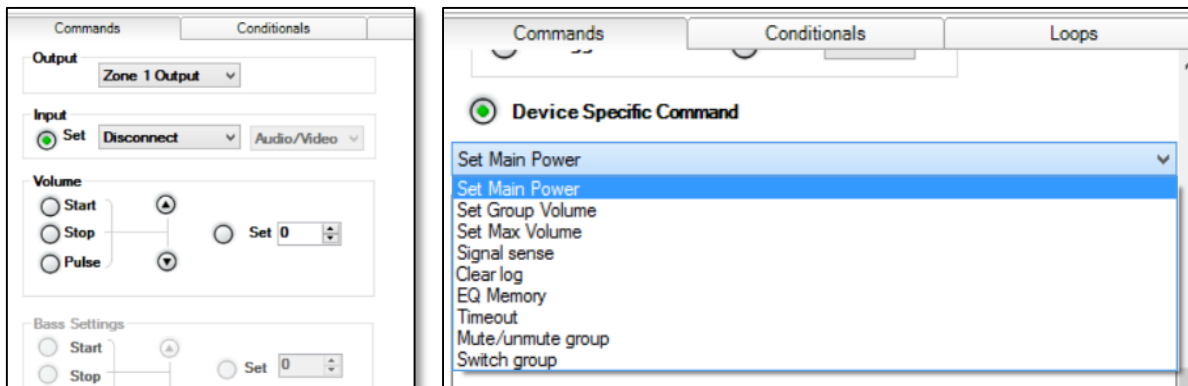


Figure 5: Driver Commands

The driver contains the usual commands found in amplifier drivers, including discrete input selection as well as the ability to raise, lower, and set volume. Bass, treble and balance are not supported in the D3400 or D4400 models. Additionally exposed via the Zone 1 driver are some Device Specific Commands. These can be seen in the drop down box in Figure 5. Please refer to D3400/4400 documentation for details of what these commands do.

Driver Variables

The driver features a number of variables for each zone, which provide feedback from the system.

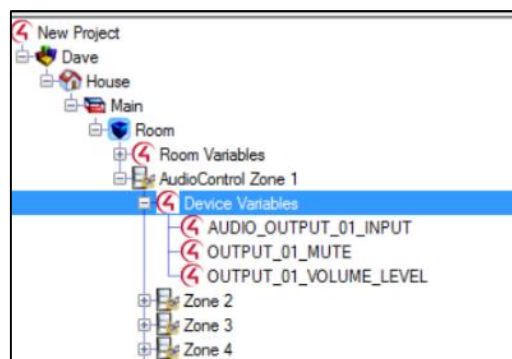


Figure 5: Driver Variables

Variable	Description
AUDIO_OUTPUT_xx_INPUT	The current input selected for zone xx
OUTPUT_xx_MUTE	The current mute status for zone xx
OUTPUT_xx_VOLUME_LEVEL	The current level for volume xx

Table 2: Driver Variables

Hiding Zones as Music Sources

The **Zone #** devices may erroneously appear as music sources on the navigator for the room in which the devices are configured. To stop this from happening, select the room in the **System Design** view and select the **Navigator** tab. Press the **Modify...** button and mark the devices as Hidden.